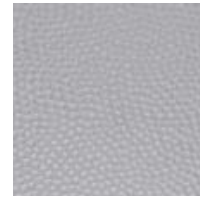


STANDARD COLOR OFFERINGS



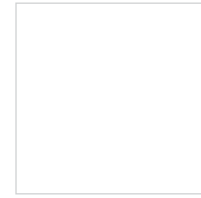
STAINLESS **H**



STAINLESS **RB**



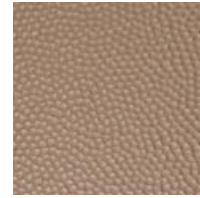
SHALE **M**



POLAR WHITE **M**



BLACK **M**



BRONZE **H**



NICKEL **RB**



JAVA **M**



MERCURY GRAY **M**



SEAFOAM **M**



CRAFT GRAY **M**



SAND SHADE **M**

H=HAMMERED **RB**=ROTARY BRUSHED **M**=MATTE

Swatches may vary due to the printing process and viewing light.
See the actual colors by contacting a Designboard dealer.



VYCOM®

Vycom manufactures market-leading brands of highly innovative plastic sheet products designed to replace wood, metal and other traditional materials in a variety of applications. The company's extensive inventory and product offerings provide its customers with the convenience of single-source purchasing and the ability to maximize efficiencies. Vycom's manufacturing agility places it in a prime position to be the essential partner in creating solutions that optimize quality and performance, and in providing a more sustainable future.

A SUBSIDIARY OF THE AZEK® COMPANY

801 E. COREY STREET
SCRANTON, PA 18505

PH: (800) 235-8320

FX: (800) 858-9266

WWW.VYCOMPLASTICS.COM



MADE IN THE USA

DESIGNBOARD

DESIGNBOARD® OUTDOOR LIVING MATERIALS



VYCOM

Vycom's DESIGNBOARD® family of materials provide trend setting, durable, and all-weather solutions for the outdoor living space. Whether you are looking for rich designer shades or the toughness of plastic with the brilliance of metal, our products provide superior performance. Unlike wood or metal alternatives, our materials will not rust, corrode, rot, delaminate, or splinter. With their excellent scratch resistance, stiffness, and UV packages; our products are ideal for a wide range of outdoor applications.

DESIGNBOARD® HDPE

Designboard® HDPE is a superior material that can be used indoors or outdoors and is ideal for wood or metal replacement applications. The materials are lead and heavy metal free, which allows them to optimize performance while being environmentally friendly. They are optimal for outdoor cabinetry, point-of-purchase displays, signage and more.

Top Applications:

- Indoor / outdoor cabinetry
- Furniture
- Point of purchase displays
- Signage
- Metal & wood replacement

Key Material Benefits:

- Easy to fabricate
- Weatherability (UV stabilized)
- Excellent scratch resistance
- Will not delaminate, chip, rot or swell
- No moisture absorption
- Great impact & stiffness resistance

Competitive Advantages

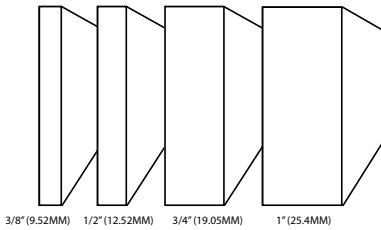
- (vs. similar materials):
- Proprietary designer color & textures
 - Maintenance free
 - Will not rust
 - Never needs painting

Compliances:

- RoHS Compliant
- REACH Compliant

STANDARD OFFERINGS		
COLORS	THICKNESSES	FINISH
STAINLESS STEEL	1/2” – 3/4” – 1”	ROTARY BRUSHED
NICKEL	1/2” – 3/4” – 1”	
BRONZE	3/8” - 1/2” – 3/4” – 1”	
STAINLESS STEEL	1/2” – 3/4” – 1”	HAMMERED
NICKEL	3/8” - 1/2” – 3/4” – 1”	
BLACK	3/8” - 1/2” – 3/4” – 1”	
BRONZE	1/2” – 3/4” – 1”	

*Special orders require a minimum and lead time.
Standard sheet sizes in most formulations are 4” x 8’
Custom colors and sizes available upon request.
PMS color matching capability.



COLORS	THICKNESSES	FINISH
CONCRETE	3/8” - 1/2” – 3/4” – 1”	MATTE
CRAFT GRAY	1/4” – 1”	
JAVA	3/8” - 1/2” – 3/4” – 1”	
MERCURY GRAY	1/4” – 1”	
POLAR WHITE	1/4” – 1”	
SAND SHADE	1/4” – 1”	
SHALE	1/2” – 3/4” – 1”	
SEAFOAM	1/4” – 1”	

